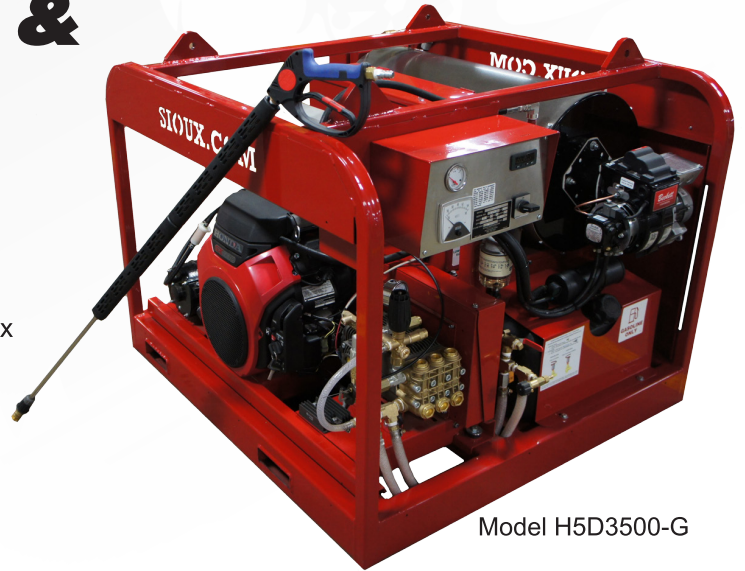


SIoux

Rugged Engine-Driven Pressure Washers & Steam Cleaners

Sioux Corporation's premium, heavy-duty engine-driven pressure washers and steam cleaners are built to perform in the most demanding conditions. Unlike competitive units, Sioux engine-driven units are constructed to provide long life and trouble-free service in the industrial workplace, and include standard features that are often considered options on competitive units.



Model H5D3500-G

Digital Temperature Control System for Optimum Cleaning Efficiency

Allows users to select the temperature for each job for optimum cleaning efficiency. This includes a digital readout display module with up and down arrow keys for easily adjusting the operating temperature. Very helpful when dialing in your cleaner for use on temperature sensitive applications.

Increased Efficiency Minimizes Fuel Costs

Units feature a schedule 80 or 160 pipe heat exchanger that is sized correctly to give excellent heat transfer efficiency. The increased efficiency minimizes fuel cost while operating and also exceeds requirements for pressure washer emission standards.

Superior Steam Cleaning Capabilities

The 310°F to 320°F (154°C to 160°C) steam capability increases versatility for every application and provides up to 333% greater cleaning capability in comparison to competitor 250°F steam cleaners.

Application Flexibility

No external power source is required making Sioux's Engine Driven cleaners ideal for remote locations.

Throttle Control for Increased Longevity

The Throttle Control reduces the engine RPM when the pump is in by-pass. This feature has several benefits including reducing the wear of the pump and therefore increasing the longevity of the engine and pump. This also reduces the fuel consumption of the engine along with the heat build up in the pump created when the water is being by-passed.

Industrial Frame for Durability & Easy Maintenance

Heavy-duty welded structural steel frame allows convenient access to internal components for fast and easy maintenance. Dual or quad lifting eyes provide balanced hoisting for increased user safety.

Dual Function Float/Antifreeze Tank

When the machine is connected to a pressurized city water supply, this tank removes any air in the water supply line and prevents damage to pump due to fluctuations in the incoming water. When the machine is plumbed to a water tank, this tank can be filled with antifreeze so that during cold weather applications, the pump, coil, and hoses can instantly be filled with antifreeze after each use.

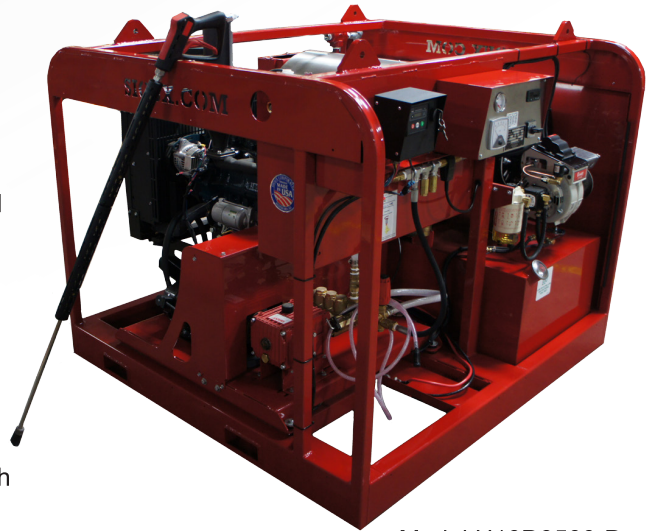
SPECIFICATION SUMMARY

Model	Engine Type		Pressure Washer Performance			Steam Performance		
	HP	Fuel	Flow	Pressure	Outlet Temp.	Flow	Pressure	Outlet Temp.
			GPM (LPM)	PSI (BAR)	°F (°C)	GPM (LPM)	PSI (BAR)	°F (°C)
S4D500-G	4.8	Gasoline	N/A	N/A	N/A	4.0 (15.1)	500 (34.5)	320 (160)
S6D500-D	6.0	Diesel	N/A	N/A	N/A	6.0 (22.7)	500 (34.5)	320 (160)
H3D3500-G	11.7	Gasoline	3 (11.4)	3500 (241)	200 (93)	1.6 (6.1)	500 (34.5)	310 (154)
H5D3500-G	20.3	Gasoline	5 (18.9)	3500 (241)	200 (93)	2.7 (10.2)	500 (34.5)	310 (154)
H5D3500-D	21.6	Diesel	5 (18.9)	3500 (241)	200 (93)	2.7 (10.2)	500 (34.5)	310 (154)
H7D5000-D	37.4	Diesel	7 (26.5)	5000 (345)	200 (93)	3.8 (14.3)	500 (34.5)	310 (154)
H10D3500-D	37.4	Diesel	10 (37.9)	3500 (241)	200 (93)	5.3 (20.1)	500 (34.5)	310 (154)

FEATURES

- Enhanced cleaning with 310°F - 320°F (154°C - 160°C) steam performance
- Heavy-duty triplex, oil bath, positive displacement plunger pump
- Increased efficiency with high efficiency schedule 80 -160 heating coil
- 120 volt, oil (diesel) fired burner*
- Automatic throttle control
- Fuel water separator and filter
- 50' (15.2m) high-pressure hose
- Increased operator safety with trigger type, shut-off gun
- Three wash tips of 0, 15, & 25 degree angles
- Brass round steam nozzle and stainless steel steam fan nozzle
- Detergent metering
- Pressure relief valve, rupture disk, thermal relief valve, and flow switch

*Features not included on the H3D3500-G



Model H10D3500-D

ACCESSORIES

Walter's™ Heavy-Duty Steam Guns -

Rated to 1500 PSI (103 BAR) and 450°F (232°C). Designed to withstand the most severe conditions. See Walter's SteamGun Flyer for complete details.

Hose Reel -

Manual crank hose reel with mounting bracket & jumper hose.

Trailer Packages -

A variety of trailer mounting options are available including insulated trailers. Consult factory for more details.



Model H5D3500-DTTM



For more information call us TOLL-FREE at (833) 763-8833.

SIOUX CORPORATION

One Sioux Plaza • Beresford, SD 57004-1500 USA
 Tel: (605) 763-3333 • Fax: (605) 763-3334
 email@sioux.com • www.sioux.com



Form #775-16



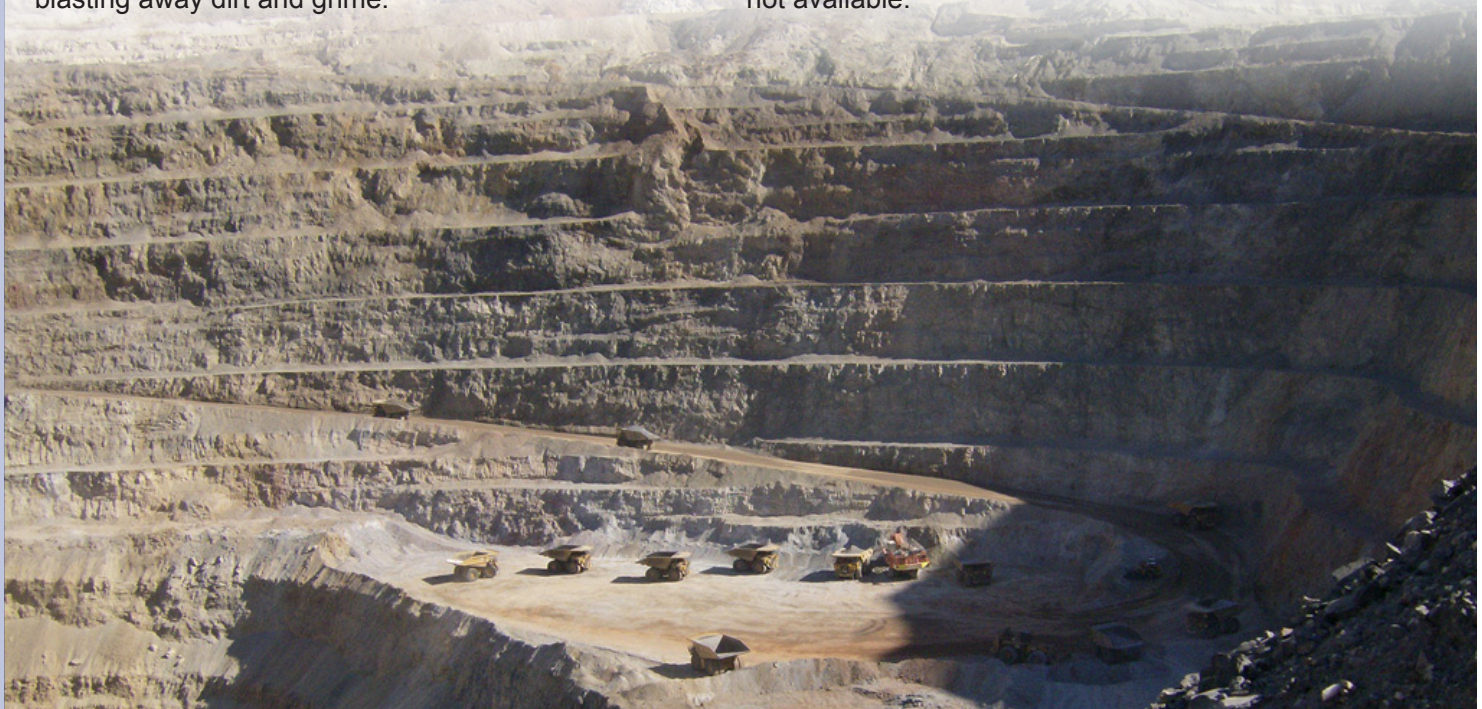
Sioux Cleaning Equipment for Surface Mining



Fuel-Fired Pressure Washers & Steam Cleaners

Sioux manufactures a full line of fuel-fired steam cleaners, pressure washers, and combination units. These units are excellent for maintenance shops, cleaning mining equipment, and general grounds and facility maintenance. Sioux Dakota II Series cleaners can clean quickly dissolving grease and oil as well as blasting away dirt and grime.

Sioux cleaners are also available as self-contained units with an integrated pressure washer/steam cleaner, water tank, gasoline or diesel engine and mounted on a heavy-duty over the road trailer. These custom machines are great for cleaning at remote locations where water, fuel, or electrical sources are not available.



All-Electric Pressure Washers & Steam Cleaners

Sioux's line of 100% all-electric cleaners are ideal for cleaning mining equipment. They blast grease, oil and dust off Cats, crawlers, loaders, bolters, graders, and other mining equipment. Units produce zero emissions meaning no fumes, no exhaust, and no open flames. Sioux's line of all-electrics comply with the Clean Air Act and emit no contaminants into the air, making them safe for indoor use. Explosion-proof models are also available for use in hazardous areas.

Sioux offers over 65 models of all-electric steam cleaners, pressure washers, and combination units with ratings from 0.8- 8 GPM and 100- 3,000 PSI. Units are Third-Party Certified and ETL listed to UL-1775 and CAN/CSA C22.2 No. 68-92.



Cold Water Pressure Washers



Only Sioux cold water pressure washers are designed for long life and continuous use in heavy-duty mining applications to blast away dirt and grime on crawlers, loaders, graders, haulers, and other equipment. Units are built with heavy-duty pumps, motors, and frames and can withstand severe conditions. Cold water washer can be built to explosion-proof specifications and to alternate electricals.

Steam-Flo® Steam Generators

The Sioux Steam-Flo® is a source of low pressure steam for a variety of applications. The steam can be used to thaw aggregate, frozen vents, pipes, valves, and controls. The Steam-Flo® can be used to sterilize and sanitize equipment at mine sites to prevent any unwanted cross contamination.



For more information call us TOLL-FREE at
(888) 763-8833



SIOUX CORPORATION

One Sioux Plaza • Beresford, South Dakota 57004-1500 USA

Tel: (605) 763-3333 • Fax: (605) 763-3334

email@sioux.com • www.sioux.com



form 701-11



Sioux Cleaning Equipment for Underground Mining



All-Electric Pressure Washers & Steam Cleaners

Sioux's line of 100% all-electric cleaners are ideal for cleaning underground mining equipment. They blast grease, oil and grime off Cats, crawlers, loaders, bolters, graders, and other mining equipment. Units produce zero emissions meaning no exhaust, no fumes, and no open flames. Sioux's line of all-electrics comply with the Clean Air Act and emit no contaminants into the air, making them safe for indoor use.

Sioux offers over 65 models of all-electric steam cleaners, pressure washers, and combination units with ratings from 0.8- 8 GPM and 100- 3,000 PSI. Units are Third-Party Certified and ETL listed to UL-1775 and CAN/CSA C22.2 No. 68-92.



All-Electric Cleaners with Explosion-Proof Design

Sioux's explosion-proof cleaners are rugged, durable cleaners designed for use in hazardous environments. These cleaners feature explosion-proof components, and a heavy-duty sealed cast aluminum electrical enclosures with galvanized steel conduit. Explosion-proof construction is available on Sioux's entire line of EN-Series all-electric steam cleaners, hot/cold pressure washers and combination cleaners.



Explosion-Proof Cleaners are Approved For Use in the Following Classifications:

Class I Flammable Gases or Vapors

Division 1 Concentrations of Gases or Vapors exist under normal operating conditions.

Division 2 Concentrations of Gases or Vapors are normally prevented.

Group C Atmospheres such as Cyclopropane, Ethyl Ether, Ethylene, or gases or vapors equivalent in hazard.

Note: Equipment must be special ordered with Group C motor.

Group D Atmospheres such as Acetone, Alcohol, Ammonia, Benzene, Benzol, Butane, Gasoline, Hexane, Lacquer solvents, Naphtha, Natural Gas, Propane, or gases or vapors equivalent in hazard.

Class II Explosive Dusts

Division 1 Explosive dusts exist under normal operating conditions.

Division 2 Explosive dusts are normally prevented.

Group E Atmospheres containing metal dust and other combustible dusts including aluminum, magnesium, and their commercial alloys, and other metals of similarly hazardous characteristics.

Note: Not appropriate for atmospheres containing Uranium, Thorium, or Zirconium dust.

Group F Carbon black, charcoal, coal, or coke and similar materials. Only hot pressure washers with the explosion-proof option will meet requirement for Class II, Division 1 and 2, Group E and F.

For more information call us TOLL-FREE at
(888) 763-8833



SIoux CORPORATION

One Sioux Plaza • Beresford, South Dakota 57004-1500 USA
Tel: (605) 763-3333 • Fax: (605) 763-3334
email@sioux.com • www.sioux.com



form 701-11

